



## Our Fixed Interest Portfolio Service at a glance

Our Canaccord Genuity Wealth Management (CGWM) Fixed Interest Portfolio Service is a discretionary service investing in a broadly balanced range of fixed interest funds. By blending these funds, it aims to achieve a net return of 5% per annum that will help to protect you against inflation over the medium term.

We believe the asset mix we have selected should outstrip both cash rates and inflation over five years or more. To achieve this, you should be prepared to hold these investments for at least five years.

**Investment involves risk. The value of investments and the income from them can go down as well as up and you may not get back the amount originally invested. The investments described in this sales aid may not be suitable for all investors. Investors should make their own investment decisions based upon their own financial objectives and financial resources and, if in any doubt, should seek advice from an investment adviser.**

## Are these investments suitable for my attitude to risk?

We have worked hard to reduce the level of risk that is usually associated with investments like this. However, you will need to be happy with a certain degree of risk to achieve this target return and should be prepared to accept some possibility of capital loss in the short to medium term.

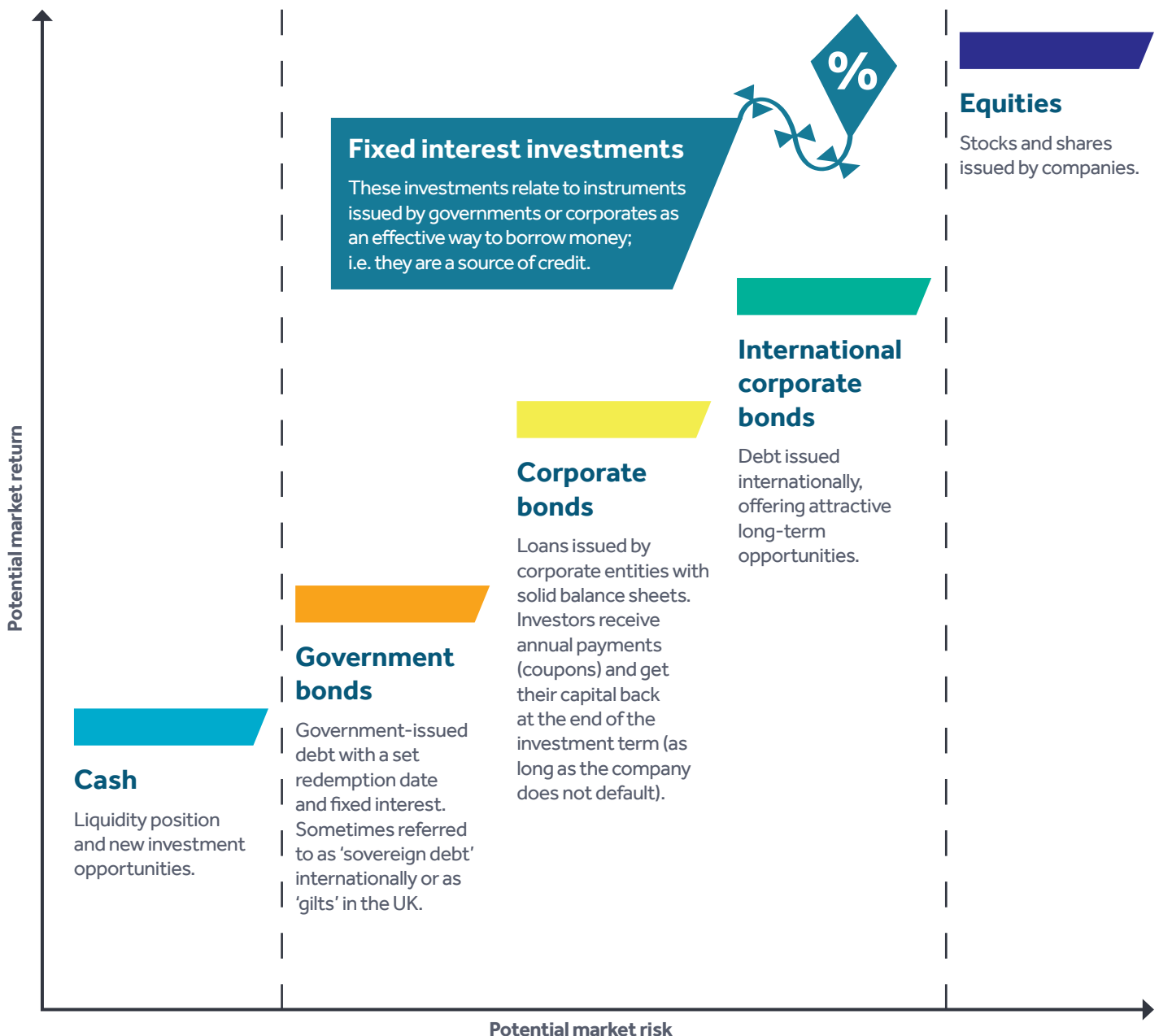
The risk and returns will be averaged out over the years you hold these investments. For example, there are likely to be years when returns are above our target and others when they are below, with movements in bond markets being the key drivers of risk and return.

We believe that our CGWM Fixed Interest Portfolio Service is an appropriate way to target such returns via opportunities in global bond and credit markets, the collective name for the market through which companies and governments issue debt to investors.

## What does the service invest in?

The chart below lists the investments used in our portfolio. It shows the potential risk and return characteristics of the types of fixed interest investments we choose from the global bond and credit markets. These investments are historically less volatile than equities, which can deliver a higher return but with more risk over the medium to long term.

### Fixed interest investment range



## Which external fund managers do you use?

We use six specialist fixed interest managers and build our portfolio from funds across the fixed interest spectrum, including government bonds, corporate bonds and international bonds.

We have invested with a number of these specialist fund managers for many years; they have outstanding capabilities, are well resourced and demonstrate a good history of preserving capital. They provide specialist knowledge in corporate and international bonds, including US short duration high-yield bonds and emerging market debt; while others are more boutique in nature, specialising in niche asset classes with the ability to create bespoke mandates.

## Is this service right for my needs?

Our Fixed Interest Portfolio Service could be suitable for you as long as you:

- Believe capital preservation is more important than capital growth
- Can stay invested for more than five years
- Believe that the target return of 5% (net of fees and other costs) will outstrip inflation over the next five years. Current market implied inflation expectation over investment time horizon is circa 3.27%\*
- Are comfortable with the level of risk required to achieve these returns: Benchmark historic volatility 4.04%‡.

## Why should I choose the CGWM Fixed Interest Portfolio?

- Our global approach enables you to take advantage of investments from around the world
- Our focus is totally flexible, offering you access to many different asset classes and markets
- We work hard to create predictable returns and mitigate risks for you
- You benefit from our research department's superb insight into markets and opportunities
- Our investment team has over 40 years' collective experience investing in fixed interest markets.

## Will I have access to an Investment Manager whenever I need them?

Yes; you will have direct access to your CGWM Investment Manager, who will keep in regular contact with you, and you will receive all our usual reports and updates.

## How much can I invest?

There is a minimum investment of £50,000.

## What fees will I need to pay?

There are no entry fees, exit fees or trading fees.

## Are these investments suitable for an ISA?

Yes; they are available as an ISA-eligible investment.

\* Source: Bloomberg as at 3 February 2023.

‡ Benchmark volatility has been 4.04% from 31 December 1998 to 31 December 2022. The maximum historic loss was -18.8% to 31 December 2022 with the benchmark yet to recover. Our equity benchmark volatility over the same period (comprising 32% FTSE All Share, 65.5% FTSE All World Ex UK and 2.5% cash) has been 13.47%.

# Discover our can-do approach

To find out more about how we go above and beyond to understand your individual investment needs and aspirations – and help you to achieve them – get in touch with your CGWM Investment Manager, or simply call or email one of our offices. We'll be delighted to answer your questions and provide details of our Fixed Interest Portfolio Service.

**T: +44 20 7523 4500**

**E: [CGWM\\_UK@canaccord.com](mailto:CGWM_UK@canaccord.com)**

## Offices nationwide

**Birmingham**  
**Blackpool**  
**Guildford**  
**Lancaster**

**Llandudno**  
**London**  
**Newcastle**  
**Norwich**

**Southampton**  
**Worcester**  
**York**

## Offices in the Crown Dependencies

**Guernsey**

**Isle of Man**

**Jersey**

**T: +44 1481 733 900**

**T: +44 1624 690 100**

**T: +44 1534 708 090**

**[canaccordgenuity.com/wealth-management-uk](http://canaccordgenuity.com/wealth-management-uk)**

## Important information

Investment involves risk. The value of investments and the income from them can go down as well as up and you may not get back the amount originally invested.

The investments discussed in this document may not be suitable for all investors. Investors should make their own investment decisions based upon their own financial objectives and financial resources and, if in any doubt, should seek advice from an investment adviser.

Investors should note that actual portfolio returns may be different to the returns of the model portfolio. Our portfolios are designed to work over a typical investment cycle of five years or more, so we recommend you stay invested for at least five years. Past performance is not a reliable indicator of future performance.

The tax treatment of all investments depends upon individual circumstances and may be subject to change.

Investors should discuss their financial arrangements with their own tax adviser as the value of any tax reliefs available is subject to individual circumstances. Levels and bases of taxation may change.

Where investment is made in currencies other than the investor's base currency, the value of those investments, and any income from them, will be affected by movements in exchange rates. This effect may be unfavourable as well as favourable.

This document is for information only and is not to be construed as a solicitation or an offer to purchase or sell investments or related financial instruments. This has no regard for the specific investment objectives, financial situation or needs of any specific investor.

Canaccord Genuity Wealth Management (CGWM) is the trading name of Canaccord Genuity Financial Planning Limited (CGFPL), Canaccord Genuity Wealth Limited (CGWL), CG Wealth Planning

Limited (CGWPL), Punter Southall Wealth (PSW) and Canaccord Genuity Wealth (International) Limited (CGWIL). They are all subsidiaries of Canaccord Genuity Group Inc.

CGFPL, CGWL, CGWPL and PSW are authorised and regulated by the Financial Conduct Authority (registered numbers 154608, 194927, 594155 and 478840). CGFPL, CGWL, CGWPL and PSW have their registered office at 88 Wood Street, London, EC2V 7QR. CGFPL, CGWL, CGWPL and PSW are registered in England & Wales no. 02762351, 03739694, 08284862 and 05374633.

CGWIL is licensed and regulated by the Guernsey Financial Services Commission, the Isle of Man Financial Services Authority and the Jersey Financial Services Commission. CGWIL is registered in Guernsey no. 22761 and has its registered office at Trafalgar Court, Admiral Park, St. Peter Port, GY1 2JA.